



鼎力 DINGLI



铁塔综合供应商：设计-制造-安装

Total Solution for Towers: Design-Manufacture-Installation

目录 Catalogue

01	公司介绍 Company Profile	+	02	产品范围 Scope of Products
03	资质荣誉清单 List of Honor and Certificate	+	04	资质荣誉证书 Documents of Honor and Certificate
05	技术与研发 Technology & Development	+	06	生产与质量检验 Manufacturing and Quality Control
07	试组装和验收 Proto-Assembly and FAT	+	08	铁塔装运 Tower Packing and Delivery
09	重点业绩之特高压 Outstanding Reference: EHV Tower	+	10	重点业绩之负冰运行 Outstanding Reference: Working under Heavy Ice
11	重点业绩之大跨距铁塔 Outstanding Reference: Big Span Tower	+	12	重要业绩清单 List of Reference for Major Projects
13	全球网络 Global Network	+		

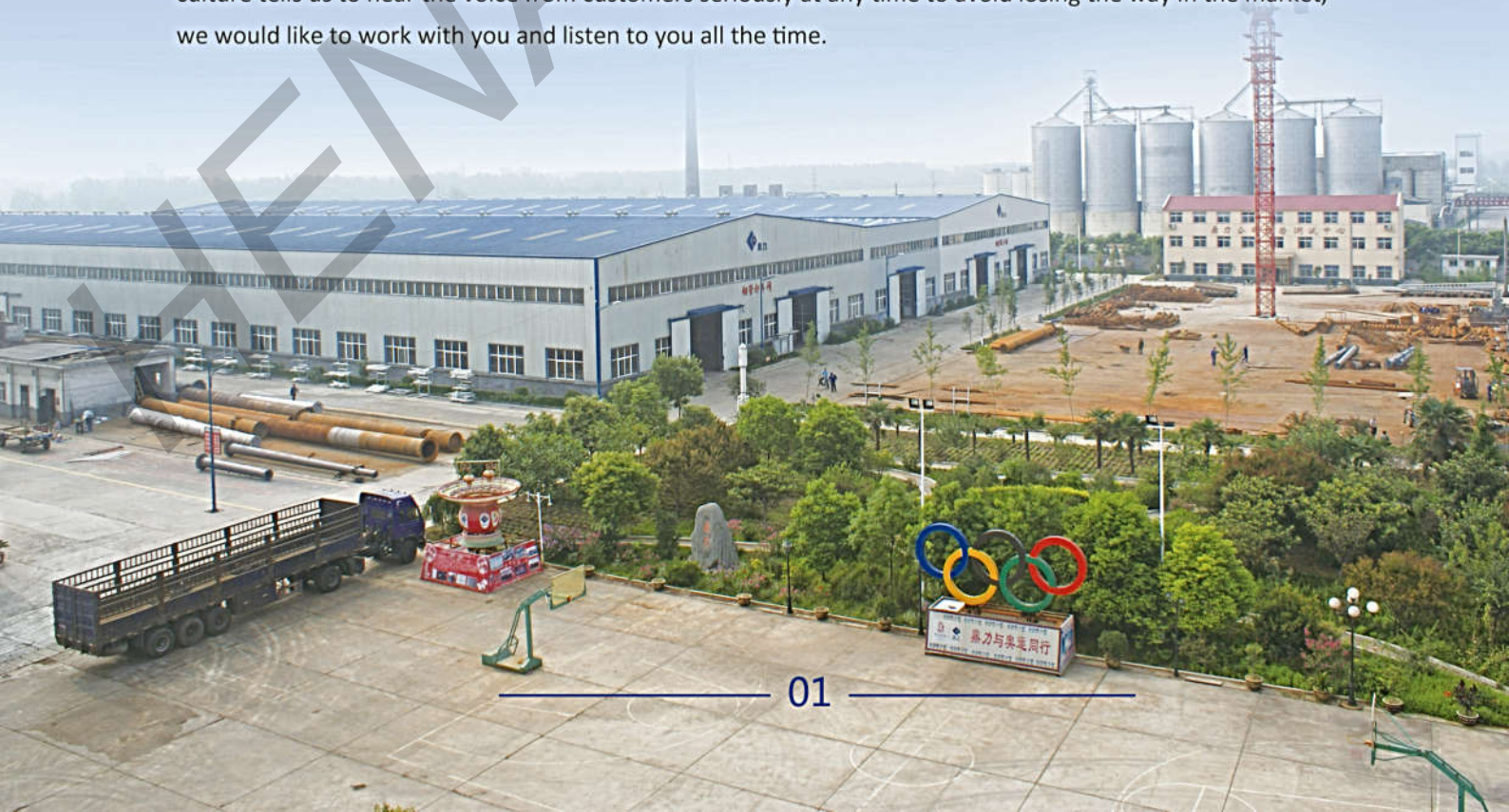
公司简介 Company Introduction

河南鼎力杆塔股份有限公司，成立于 1966 年，起步于西平县水泥制杆厂。经过 50 年艰苦创业，已经发展成为集设计，制造，成套设备供应，施工为一体的大型综合企业集团。鼎力杆塔积极投身电网建设，作为国家电网特高压工程优质供应商，参与所有特高压建设项目。成立至今，鼎力杆塔累计供应超过 400 万根水泥电杆，380 万吨各种塔材钢结构。在生产制造的同时，鼎力旗下的设计和工程公司完成上百个输配电项目的勘测设计和施工工作。

从 2000 年开始，鼎力积极开发国际业务，目前国际业务综合占比已经超过公司营业收入的 30%，产品交付遍布欧洲，美洲，非洲和东南亚市场，为 33 个国家的 100 多个客户提供了优质服务。为进一步开发国际市场，鼎力杆塔通过了多种国际认证，除了基础的 ISO 认证之外，还通过了 ASTM 认证，AWS 认证等，并通过哥斯达黎加和智利市场的材料质量认证。鼎力的企业文化要求所有员工认真倾听客户声音，为客户提供优质产品和卓越服务。鼎力人竭诚希望与您合作，共创未来！

Henan Dingli Pole & Tower Co., Ltd. (DINGLI) has started from a concrete poles production line in 1966. After 50 years' development, now we growing up to a group company covering a big range of business include design, engineering, manufacture, package supply and installation for power transmission and distribution projects. In the past 50 years, we have produced around 4 million pcs of concrete poles, 3.8 million tons of steel towers, and we have also finished designing and engineering job for more than 100 transmission and substation projects.

From the year of 2000, we have started our overseas business, now we have worked with more than 100 customers from 33 countries located in Europe, South American, Middle Asia and African. More than 30% of our products have been delivered to our overseas customers. Expect the basic certificates like ISO, we specially applied more, such as ASTM Certificate, AWS Certificate, and we also got the Certificates for our raw materials in Costa Rica and Chile' s Lab based on ASTM Standard and Nch203 Standard. Our company culture tells us to hear the voice from customers seriously at any time to avoid losing the way in the market, we would like to work with you and listen to you all the time.



产品范围
Scope of Products



角钢塔 35kV-1100kV
Lattice Tower 35kV-1100kV



管型变电站架构 35kV-1000kV
Tubular Steel Structure in Substation 35kV-1000kV



铁路接触网支架
Steel Structure for Railway Contact Network



单管信号塔
Tubular Telecommunication Tower



钢管杆 1kV-230kV
Steel Pole 1kV-230kV



角钢变电站架构 35kV-1000kV
Lattice Steel Structure in Substation 35kV-1000kV



水泥电杆 0.4kV-230kV
Concrete Pole 0.4kV-230kV



重型人防门
Heavy Civil Air Defence Door



电信/通讯塔
Lattice Telecommunication Tower



钢管塔 230kV-1000kV
Tubular Tower 230kV-1000kV



荣誉和资质清单 List of Honor and Certificate

原电力部重点产品定点生产企业

Major products fixed production enterprise appointed by former Ministry of Electric Power

皖电东送特高压示范工程焊接质量特等奖

Special Award of Welding in Wandian Dongsong National EHV Demonstration Project

河南省著名商标 / 市长质量奖

Well Known Trade Mark / Mayor Quality Award of Zhumadian City

国家高新技术企业 / 河南省科技型企业

National High and New Tech Enterprises / Scientific and Technological Enterprise of HENAN

河南省重点培育装备制造企业

Key Cultivation Equipment Manufacturing Enterprise of Henan Province

全国城乡电网建设与改造工程首批推荐企业

The First Batch Recommend enterprise for National Urban and Rural Power Grid Construction and Renovation Project

ISO 质量管理体系证书 (三证)

ISO Quality Management Certificate (9001, 14001, 18001)

钢铁支柱铁路产品认证证书 / 混凝土支柱铁路产品认证证书

Products Certificate of Support Steel Poles / Concrete Poles in Railway System

220kV 钢管杆型式试验报告

Type Testing Report of 220kV Steel Pole

750kV 角钢塔型式试验报告

Type Testing Report of 750kV Lattice Tower

750kV 变电站架构型式试验报告

Type Testing Report of 750kV Steel Structure in Substation

1000kV 管塔型式试验报告

Type Testing Report of 1000kV tubular tower

哥斯达黎加大学材料实验室原材料检验报告

Raw Materials Certificate by Costa Rica University Material Lab based on ASTM Standard

智利大学材料实验室原材料检验报告

Raw Materials Certificate by Chile University Material Lab based on Nch 203 Standard

ASTM 标准材料, 焊接, 镀锌检测报告

ASTM Certificate for Raw Materials, Hot Dip Galvanization and Tower Welding

Q690 超高强度铁塔验收证书

Q690 Extra High Strength Steel Tower Certificate (Big Span tower for The Yellow River)

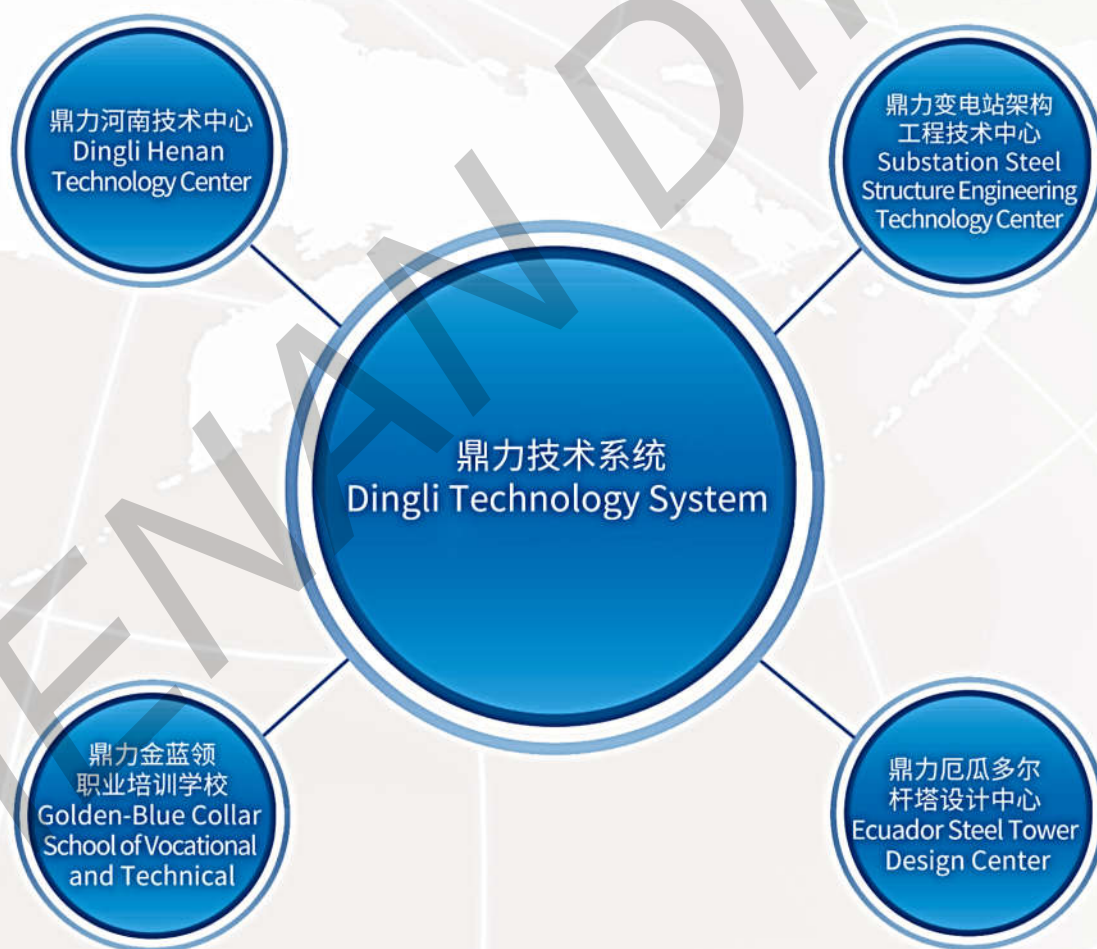
国家电网直升机吊装塔生产基地认证

Helicopter Hoisting Steel Tower certificate by Erickson American and State Grid of China.

荣誉和资质

坚持技术创造效益，技术服务客户，是鼎力公司长期坚持的发展路线之一。目前鼎力公司拥有完善的技术团队和技术服务体系，建立了鼎力变电站钢结构工程技术中心和鼎力厄瓜多尔杆塔设计中心。基于大量的国外供货经验，鼎力技术团队可以依据美标设计标准和国标材料标准综合设计杆塔，达成减重和免代料的效果，降低项目成本的同时，减少工作程序，提高图纸确认效率。

During the development of the company, DINGLI always takes technical improvement as one of the key factors. Now DINGLI has a complete technical team and experienced technical service system. We have built DINGLI Substation Steel Structure Engineering Technology Center and Ecuador Steel Tower Design Center. Based on our long time business with overseas customer, we have worked out the solution to design the towers with ASTM design protocols and meanwhile with GB standard for raw materials. In this case, we will reduce the weight of the towers and at the same time, avoiding the process of material replacement between two standards. This will reduce the total cost of the project and increase the efficiency during the drawings confirmation process.





鼎力杆塔建有八条生产线和三个独立的质量检测中心，年铁塔产能 25 万吨。根据不同类别产品，鼎力逐步完善了相应生产过程控制程序。根据产线特点，自主研发配置了大量实用工具以提高工作效率。质量检验程序与生产过程相结合，全程参与每个生产环节，从原材料进厂到成品包装的数十道工序中，均有质检部门密切参与。鼎力人坚信，第一次就把事情做对，是最大的节约！

DINGLI, with tower annual capacity of 250,000.00 Ton, has built eight production lines and three quality inspection center. According to different type of products, we have worked out corresponding procedures to make sure the best efficiency and quality. We have also worked out many auxiliary tools used in the production line to save the cost and reduce the manpower. Quality control department, as inspector, involving deeply into each single production process from raw material incoming to Delivery-Packing. We firmly believe, the best cost-saving solution is to do the things right at the beginning.



试组装和验收 Proto-Assembly and FAT

本着对客户负责，对产品负责的态度，鼎力公司对每一个首次生产的塔型，进行免费试组装。无论客户是否要求，鼎力公司都会认真完成试组装工作。除水平试组装之外，鼎力公司还可以提供立式试组装服务，以便更加全面的检查铁塔在未来安装过程中可能出现的问题。

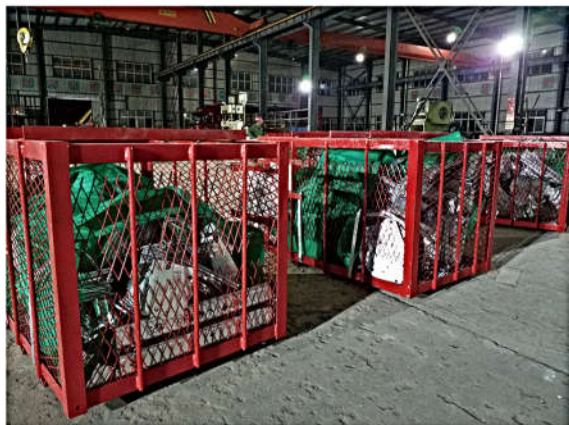


我们竭诚欢迎用户代表全程参与我们的试组装工作，我们愿意积极配合客户的要求，按照客户提供的工作程序，完成对试装铁塔的验收工作。

Dingli will make Proto-Assembly for each new type of tower for free no matter customer request or not. Not only the horizontal Proto-Assembly, we could also carry out the vertical Proto-Assembly in order to check all the details when the tower was installed. We warmly welcome the representative of our customers come to join the Proto-Assembly process with us, and we are willing to accept customized procedures and standard.



铁塔装运 Tower Packing and Delivery



标准铁塔装运
Standard Tower Packing.

鼎力拥有完善的适应各种路况和装卸条件的铁塔装箱方案，以保护铁塔在运输和装卸过程中的安全。为应对恶劣路况和缺乏大型吊装设备的施工环境，鼎力开发出一体式装箱方案。铁塔在工厂整体固定在框架上，通过导轨进入车厢之后固定，期间无需装卸，达到现场以后一次拖出，整体可节约70%的装卸时间。Dingli has detailed packing solution for all kind of road and loading condition to protect the towers without damage during the transportation. To transport in bad road, or load in the filed without heavy equipment, we have worked out integrated packing solution, which we load all the parts onto a frame in the factory and push the frame into the containers and fix it on the rail. When the containers arrive to working filed, it could be directly pulled out as one piece and it will save 70% of loading time during the whole process.

框架轨道式装运
Frame-Rail Integrated Packing



重点业绩：
特高压

鼎力杆塔参与特高压建设中的每一个项目，累计生产 500kV 以上铁塔 110 万吨。在长达八年的特高压供货之路上，鼎力产品零缺陷零投诉，赢得了国家电网公司的高度评价。

Dingli has supplied towers for every Extra High Voltage Transmission Line Project. Till the year of 2017, Dingli has produced more than 1.1 million tons of towers for above 500kV projects. We were awarded with a high appraisal for our zero-failure towers and zero-complaint service.



鼎力1000kV淮上线铁塔正在安装，单塔重量270吨，总部件数10746个。一次安装成功。

Dingli 1000kV tubular tower installed in the HuaiNan-Shanghai Transmission Line. The Weight for unit Tower is 270 ton and totally it has 10476 parts in the whole tower.

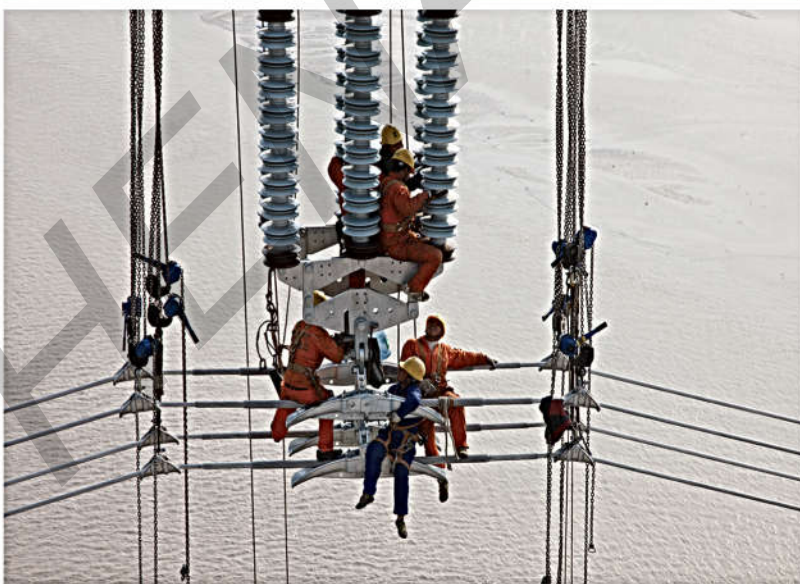


重点业绩： 负冰运行

2008年中国南方遭遇百年不遇的暴雪和冻灾，导线和铁塔大面积负冰运行，造成大量倒塔事故，但是鼎力杆塔供应的1075基铁塔无一倒塌，在高于标准荷载三倍的情况下全部安全运行。国家电网公司对我司产品的优异表现提出了特殊表彰。

In year of 2008, there is very heavy snow in South China not occur even in a hundred years. This bring a heavy cover ice on the towers and conductors. A lot of towers has fallen and broken in this disaster, but all towers from Dingli, totally 1075 set, are working well under 3 threes loading strength. We got special award from State Grid of China for the outstanding performance of our towers.

重点业绩：大跨距铁塔
Outstanding Reference: Big Span Tower



重点业绩：
大跨距铁塔

鼎力参与跨越黄河输电线路项目，并首次根据超高强度钢材（Q690）生产出满足高度跨距要求，同时大幅减轻塔身重量的跨河铁塔，以降低塔身对黄河滩地软质地基的压迫，避免铁塔沉降。

Dingli has attend the Yellow River-crossing transmission line, and the first time in China, we have produced the tower based on Q690 steel (Extra High Strength Steel). The tower has a good performance on the height and span and meanwhile it has a big reduction on the weight to avoid pressure and sedimentation of the tower to the soft river bottom land.

重要业绩清单
List of reference for Major Projects

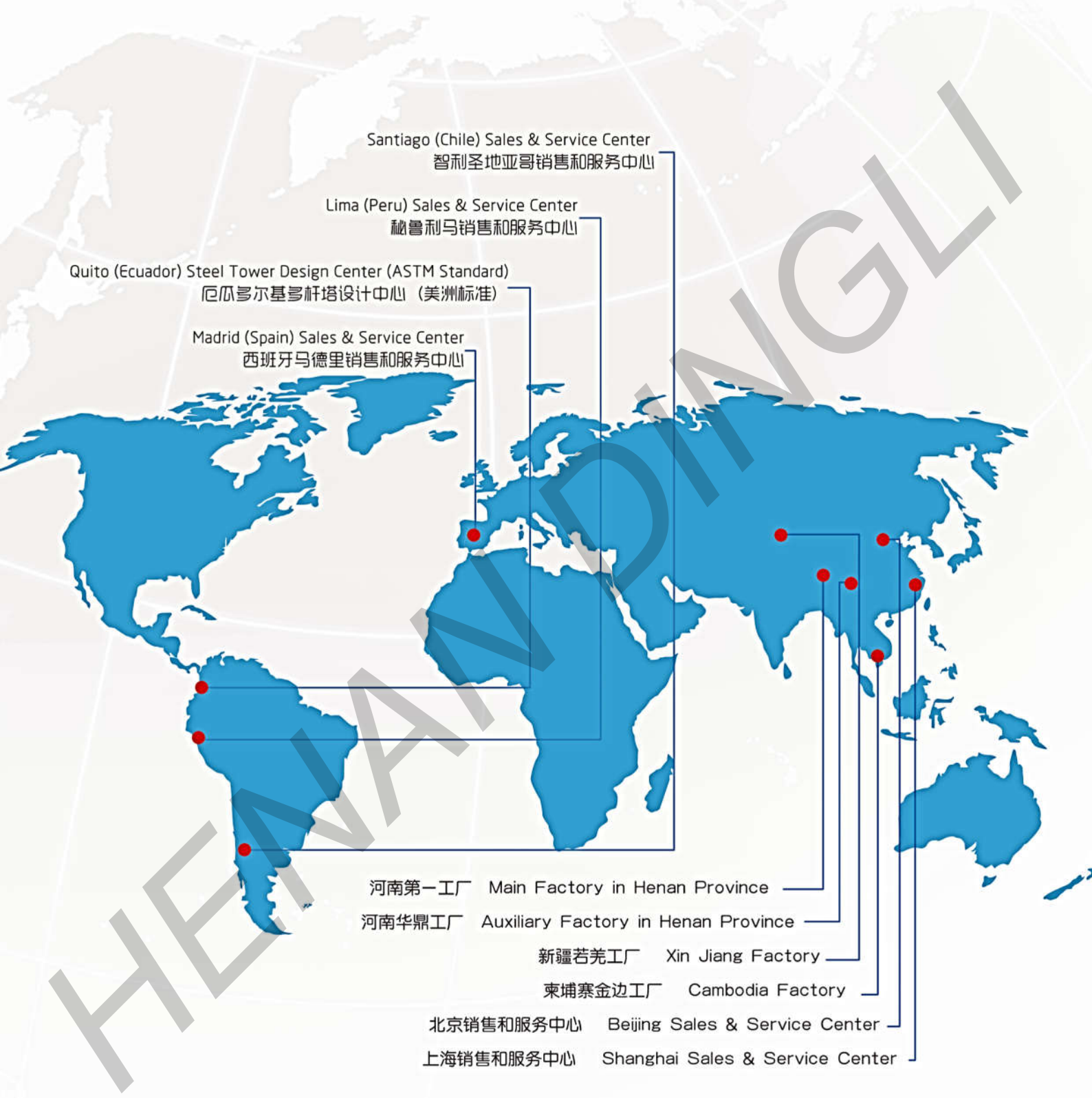
国内业绩 Domestic Market

项目名称: Project Name	数量 Qty 吨	日期 Year
石武高铁许昌东 220kV 牵引站供电工程	2340	2010
新疆与西北主网联网 750kV 第二通道输变电工程 (青海段)	7938	2011
皖电东送 1000kV 淮南至上海特高压交流输电示范工程	7653	2012
浙北-福州 1000kV 特高压交流输变电工程 (浙江公司)	4403	2013
安徽众兴至孔店 500kV 线路工程	2090	2013
锡盟-山东 1000kV 特高压交流输变电工程	6678	2014
淮南-南京-上海 1000kV 特高压交流输变电工程淮南站扩建间隔工程	5439	2014
榆横-潍坊 1000kV 特高压交流输变电工程	10143	2015
蒙西-天津南 1000kV 特高压交流工程蒙西-晋北 1000kV 线路工程 (山西段)	4599	2015
哈郑直流郑州换流站 500kV 送出工程	3438	2016
顺义-太平 I、II 回开断接入北京东特高压变电站 500kV 线路工程 (河北段)	2344	2016
甘肃电力公司 750kV 桥湾输变电工程	6087	2016
昌吉-古泉直流 1100kV 输变电工程	23341	2016

国外业绩 Overseas Market

国家 Country	项目名称: Project Name	数量 Qty T	日期 Year
Ecuador	Quito 110kV Urban Power Net Project	370	2010
Trinidad & Tobago	Rural Distribution project poles for low voltage line	1570	2010
Pakistan	Lahore Urban 230 kv Tubular tower project	1630	2011
Cambodia	115kV Gongbu Province Buge Mountain Power T-Project	819	2011
Cambodia	230kV Power Line of Norodom Sihanouk	1010	2012
Jordan	DISI Station of 132kV Substation Equipment Total Package	670	2012
Tajikistan	Pamirs-Khorog 110kV Transmission and Substation	2110	2013
Spain	220kV D.R.Congo Transmission Line Project	780	2013
Ethiopia	500kV Ethiopia GDHA Transmission and Distribution Project	1543	2013
Zambia	PHCN 132kV Power transmission line project	224	2014
Ecuador	4G telecommunication tower renovation project	1320	2015
Honduras	MONOPOLO TELESCOPICO H21m V 70mph by Claro	870	2015
Zambia	Kansanshi Mine 330kV Substation.	910	2015
Ethiopia	Dedesa 500kV Substation and Transmission Line	3610	2015
Chile	LT 1x220 kV CHILOÉ - GAMBOA	2160	2016
Bolivia	BOLIVIA In Year 2016, Chaco Tarija 230kV Substaton	248	2016

全球网络
Global Network



铁塔综合供应商 Total Solution for Towers

鼎力人坚持为客户提供优质产品和服务，时刻倾听客户声音，
了解客户需求。真诚期望开启合作，共创佳绩!

Dingli People, insist on offering best products and service to all of our customers.
We will listen to you ,study from you, and make mutual benefit with you.



Email: frankpowerchina@hndlpe.com

Office Phone: 86-0371-55360039

Cell Phone: 86-15938796699

Website: www.hndlpe.com

Address: Dingli Industry Park, Middle of Yingbin Avenue,
Xiping City, Henan Province, China. 463900